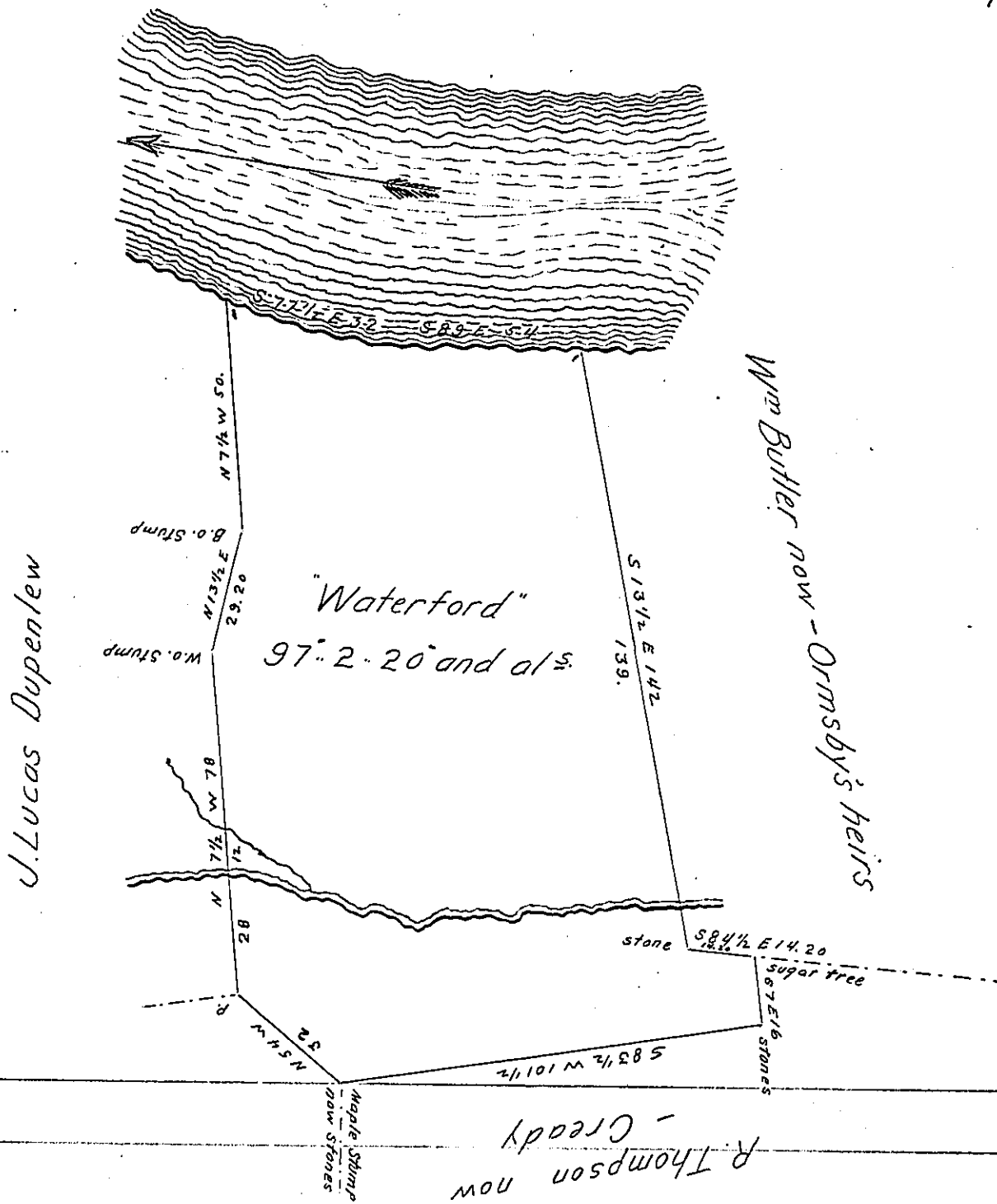


H48-108
1-194



A Draught of A Survey Situated in Mifflin township Allegheny County
 Originally Surveyed Sept 6. 1792 on a Warrant granted to Samuel
 Glass dated April 10. 1786 coled "Waterford" And the lines retraced
 October 18th 1833 for Johnston Glass and contains ninty seven acres
 one half twenty perches and allowance of Six pr. ct for roads &c.

To Jacob Spangler Esqr. N. Patterson D.S.
 Sur. Gen!

IN TESTIMONY that the above is a copy of the original remaining on file in
 the Department of Internal Affairs of Pennsylvania, made
 conformably to an Act of Assembly approved the 16th day of
 February, 1833, I have hereunto set my Hand and caused
 the Seal of said Department to be affixed at Harrisburg,
 this tenth day of January 1905.

James D. Brown
 Secretary of Internal Affairs.